



Scan the qr code with a browser.
Visit our website for more product information.
SHENZHEN MEIRUIKE ELECTRONIC TECHNOLOGY CO., LTD

RK9901 DIGITAL
POWER METER

SHENZHEN MEIRUIKE ELECTRONIC TECHNOLOGY CO., LTD.
Address : Floor 5, Block 1, Qingchangtai Industrial
Zone, No 365, Silian Road, Henggang
Town, Longgang District, Shenzhen
Tel: 86-755-83987768
86-755-82736668
[Http://www.chinarek.com](http://www.chinarek.com)

CONTENTS

Foreword.....	1
Accessorize checkage.....	2
Safety stipulation.....	2
Chapter I basic principle & function.....	3
1.1 Structure and principle diagram.....	3
1.2 Function.....	4
1.3 Figures & characters.....	5
Chapter II Techno-index.....	6
2.1 Input.....	6
2.2 Basic error (Precision).....	6
2.3 Display function.....	7
2.4 Outer dimension.....	7
2.5 Routine techno-index.....	7
Chapter III Structure、button & display.....	8
3.1 Front and rear panel.....	8
3.2 Operation button & function display.....	9
3.3 Abnormal display in the situation of over-range.....	10
Chapter IV Preparation for pr-operating.....	11
4.1 Cables connection.....	11
4.2 Turn on / off power.....	11
Chapter V Display voltage / Current / Available power / Power factor / Frequency test.....	12
5.1 Display / Current / Available power test.....	12
5.2 Calculate & display power factor.....	12
5.3 Calculate & display frequency.....	13
Chapter VI Judgement function of upper & lower limit	14
6.1 Set power 、current upper & lower limit value.....	14
6.2 The judgement of available power current upper & lower limit	15
Chapter VII Calibration.....	16
Chapter VIII Simple operating guidance.....	17

Foreword

Firstly thanks for your intelligent choosing and buy of our RF9800 / RF9901 digital power meter (namely electronics parameter tester, General-purpose name is "Digital Power Meter" for all over the world and DPM for short) .Read "UESER MANUAL"carefully to insure your correct operation before operating the instrument.

Caution:

- 1、It is shame-making to inform the contents once the contents has changed
- 2、 We have made our great efforts to insure USER Manual's veracity, If any questions or errors have been found in it, Please contact our corporation or authorized product agent.
- 3、 Copying or juggling this "USER MANULA" is forbidden,it would be regarded as serious behaviors and will be prosecute.
- 4、 All the different explanation should be under our techno-department's explanation.

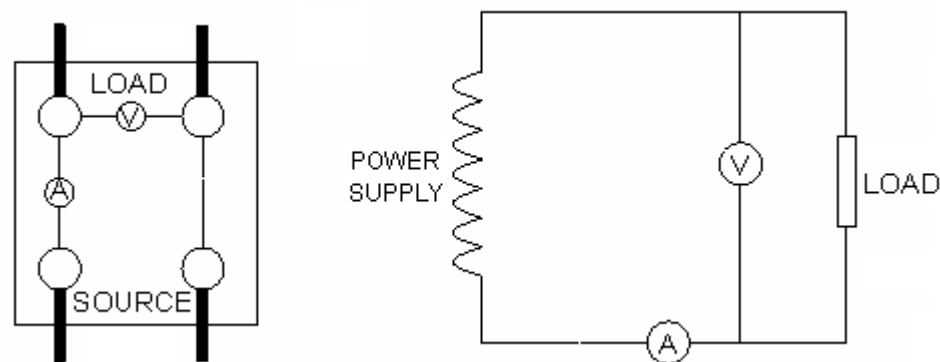
Chapter VIII Simple operating guidance

8-1 Connect power supply cable

Power supply voltage required: $220V \pm 22V$, Insure power supply voltage to be within the scope of rate voltage of the instrument and connect to ground well..

8-2 Connect test circuit

Connect tested load as the following diagram and insure voltage and current to be within scope of the instrument



8-3 Turn on power

It will display the start up information after turning on power, then the instrument would be in status of test-waiting.

8-4 Basic test function

Windows display voltage (v), current ([m]A), power factor (PF), power ([k]W), frequency (Hz) parameter.

Remark: detailed operation steps and techno-index are shown on “ USER MANUAL” .

Accessories checkage

Check instrument and relevant accessories according to package detailed list when you opened the instrument packing box at the first time, Please contact you instrument provider immediately if you discovered instrument or the accessories mistake, accessories missing or improper, Check it whether the host model and measurement range is consistent to your ordering, The instrument model、 range and series number are shown on the rear panel.

Caution:

The instrument's power supply is alternating current 220V and the power cable 's permitted maximum voltage is less than 250V、 maximum current is less than 10A.

Preserve the package box to prevent from the instrument's damage cause by the packing box unqualified set when it is for the purpose of conveyance use.

Safety provision

Notice the following safety provision in the process of using this instrument, the false or not appropriate operation all will make instrument function damaged, In order not to the human body hurt or damage instrument, the user should refer the USER MANULA 's related explanation strictly. In order to avoid human body' damage.

Don't operate on the occasion of explosive environment

Don't operate near to easy-burning and exploding occasion to prevent safety damage occurrence.

Protection ground cable

Insure ground cable has been connected well before turning power on in order to prevent elect artichoke, the ground terminal is namely the ground terminal of plug.

Power supply

Insure power supply voltage match to ratio voltage.

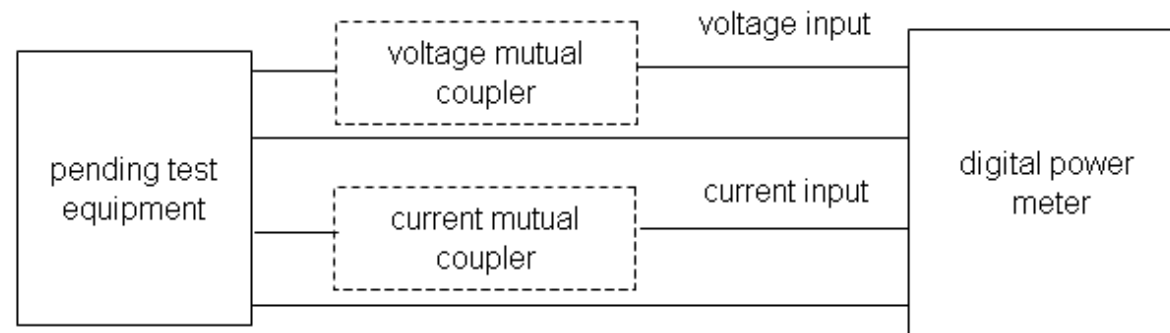
Don't dismantle any outer shell of instrument

Some circuit area is with high voltage, so it is forbidden to dismantle instrument outer shell unless having special permission.

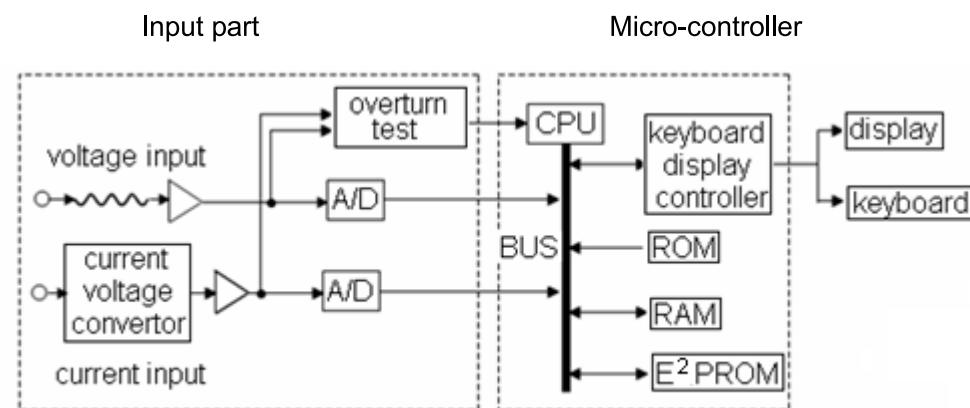
Chapter I Basic principle and function

1.1 System constitution and principle box diagram

System constitution



Principle box diagram



It is made up of input (voltage input and current input) 、 micro-controller、 display and interfaces.

Input voltage is programmable-amplified after divider circuit and then input to A/D convector in the process of voltage input.

Sample current sensor make current transform to voltage, then programmable-amplified and input to A/D convector in the process of current input.

Voltage and current input signal is transmitted to micro-controller to do data operation after A/D converting. Micro-controller can process auto-range switch、 data operation、 display and output control function.

Chapter VII Calibration

7.1 Equipment:

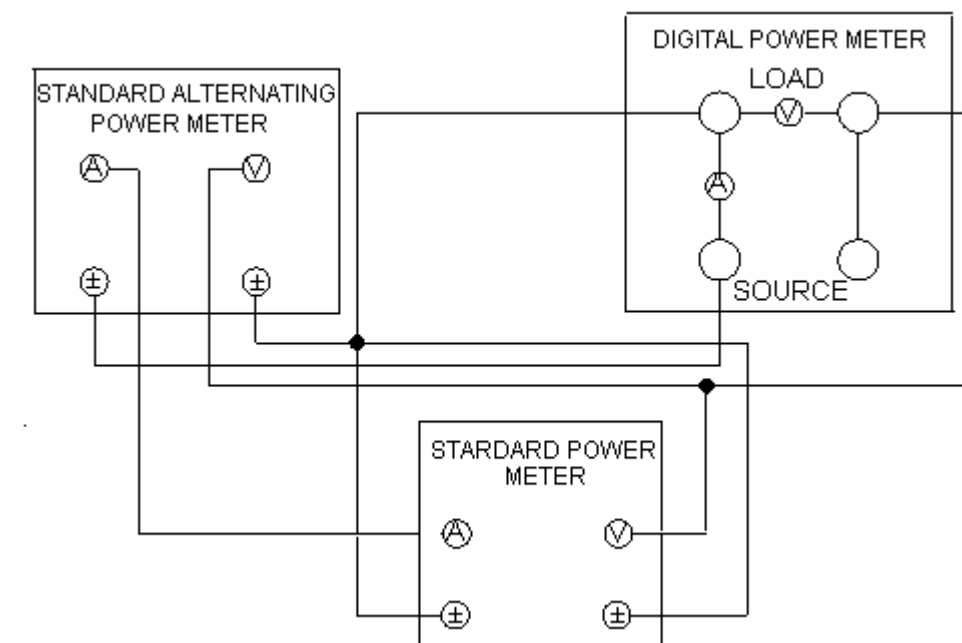
Alternating power meter (0~600V, 0~50A, stability ratio exceeds by 0.03%, 45~65 Hz)

Recommended model: Rek YF58B industrial frequency power supply

Standard Digital Power Meter (10~600V, 0.01~50A, precision exceed others by 0.1%, 45 Hz ~65 Hz)

Recommended model: Rek RF2010S multi-function Aandard Alternating Meter;.

7.2 Calibration procedure.



Caution:

The instrument will not excuse upper & lower power / current limit judgement when avail-power and current test value approach zero approximately.

On the condition that upper & lower limit current / power has been canceled, The upper & lower limit current should be set at 9999A and 0.000A respectively; The upper & lower limit power should be set at 99999W and 0.0000W respectively.

6.2 Avail-power and current upper & lower limit judgement.

OK: Power (absolute value) and current test value are in the scope of pre-set upper & lower limit value ($P_1 \leq |P_{TEST}| \leq P_H$ 且 $A_1 \leq A_{TEST} \leq A_H$), “OK” green indicator light works.

LOWER OUT: “LOWER OUT” red indicator and buzzer works when power and current test value (absolute value) is under the lower limit set value ($|P_{TEST}| > P_H$ 或 $A_{TEST} < A_L$), The test current or power test value indicator light flashing go with red “UPPER OUT” indicator light flashing but green “OK” indicator light extinguishing at the same time.

UPPER OUT: “UPPER OUT” red indicator and buzzer works when power and current test value (absolute value) is higher than the upper limit set value ($|P_{TEST}| > P_H$ 或 $A_{TEST} < A_L$), The test current or power test value indicator light flashing go with red “UPPER OUT” indicator light flashing but green “OK” indicator light extinguishing.at the same time.

Caution:

Press down the “MUTE” key-press to prevent buzzer tweet and the ‘MUTE” indicator light works at the same time, Buzzer will not work once the judgement result is beyond the specification, then to press down “MUTE” key-press again to cancel mute function.

1.2 Function

Digital power meter’s models and functions as below:

Function Model	Voltage / current / power Power factor / frequency Auto-range						Power and upper & lower Current judgement	Data hold and storage	Mute
RF9800	√	√	√	√	√	√			
RF9901	√	√	√	√	√	√	√	√	√

Test function

Voltage and current are transmitted to A/D convector after sampling and amplification, Voltage and current signals are converted to digital signals and then transmitted to micro-controller, It can get true-virtual voltage value (Urms)、true-virtual current value (Irms)、avail-power (P) and power factor (RF) by scattering integral.

$$U_{rms} = \sqrt{\frac{1}{N} \sum_{i=1}^N (U_i)^2}$$
$$P = \frac{1}{N} \sum_{i=1}^N U_i \cdot I_i$$

$$I_{rms} = \sqrt{\frac{1}{N} \sum_{i=1}^N (I_i)^2}$$
$$PF = \frac{P}{U_{rms} \cdot I_{rms}}$$

N denotes sampling points within one cycle, U_i 、 I_i denote transient sampling point of voltage and current

Upper & lower limit judgement function

RF9901 digital power meter is characteristic with upper&lower limit judgement function, This function achieves the comparation of avail-power and current test value with the presented value, The annunciator would work when the test value is beyond the presented scope.

Current range switch function

RF9901 is characteristic with current switch function, it can achieves automatic and manual function switching in 20A、2A ranges or 40A、4A ranges, The detailed operation buttons are shown on the page 9 “ operation key-press and function display ”.

1.3 Digits、characters

The instrument test results are shown by 7 segments LED and extend to indicate some restricted characters and digits.The following are digits and characters indicated by 7 segments:

0→	A→	K→	U→
1→	B→	L→	V→
2→	C→	M→	W→
3→	D→	N→	X→
4→	E→	O→	Y→
5→	F→	P→	Z→
6→	G→	Q→	+→
7→	H→	R→	-→
8→	I→	S→	×→
9→	J→	T→	÷→
-1→	-0→		

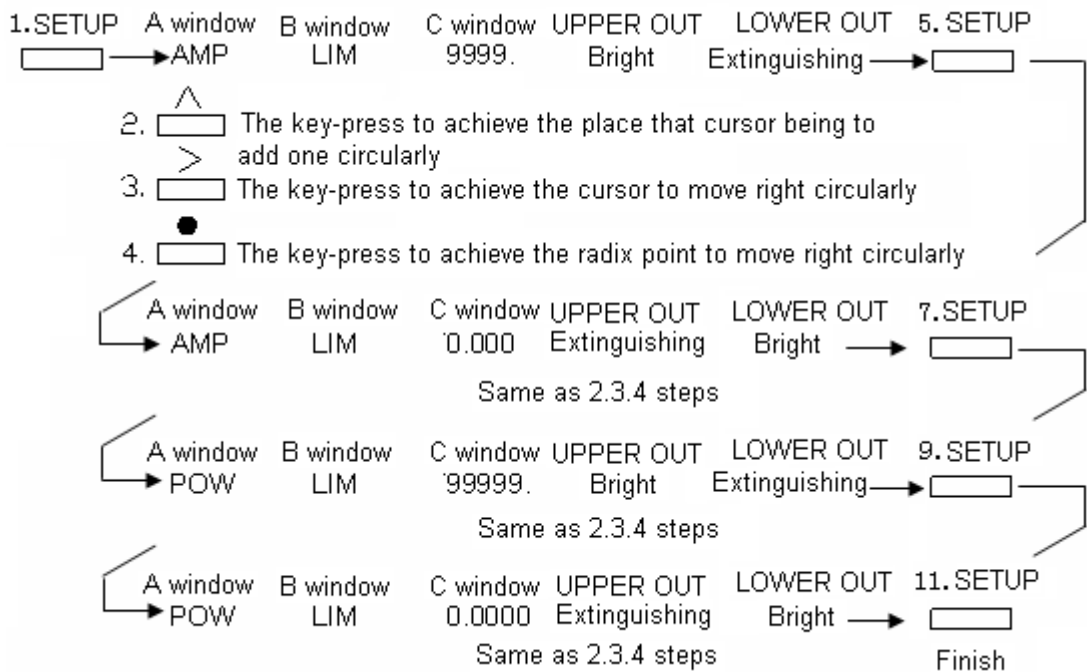
Chapter VI Upper & lower limit judge function

It is characteristic with power and current upper & lower limit judge function for RF9901..

6.1 Set power and upper& lower limit value

Relevant key-press: to set , ^ , > , • , PF and FREQ function

Operation procedure



Explanation:

1) Set upper & lower limit value

Displaying “AMP” in A window denote to set upper & lower limit current value, The UPPER OUT indicator light flashing denote to set upper limit current value while the LOWER OUT indicator light flashing denote to set lower limit current value.All the set of upper & lower limit current value will be shown on C window eventually.

Displaying “POW” in A window denote to set upper & lower limit power value, The UPPER OUT indicator light flashing denote to set upper limit power value while the LOWER OUT indicator light flashing denote to set lower limit power value.All the set of upper & lower limit power value will be shown on C window eventually.

2) Upper & lower limit value

Upper & lower limit current value: 0.000 ~ 9999A

Upper & lower limit power value: 0.000~99999W

Chapter II Techno-index

Select display function

D Window shows power factor for RF9800 (PF) .

(RF9901) Press down “FUNCTION SELECTION” key-press to select power factor selection mode (PF)

Explanation:

Power factor = Avail-power / (Voltage virtual value × Current virtual value)

Display scope: -1.000 to 1.000

Remark:

Power factor window shows 0.000 when test signal is very feeble.

5.3 Test / frequency display

Frequency display

Relevant key-press: Function selection.

Select display mode

Press down “FUNCTION SELECTIO” key-press to display frequency for RF9901(Hz).

Explanation:

Test range: 45Hz ~ 65Hz.

Remark:

Frequency window shows 0.000 when input signal is very feeble.

2.1 Input

Items		Voltage (V)		Current ([mA])	
		RF9901	RF9800	RF9901	RF9800
range		300V/150V	600V/300V/150V/75V	20A/2A or 40A/4A	20A/8A/2A/0.5A
Range switch mode		Auto-range			
Input impedance		More than1MΩ		Less than 0.02Ω	Less than 0.02Ω
Transient maximum permitted input within 1s		1000V		40A or 60A	40A
Continuous maximum permitted input		700V		30A or 50A	30A
Frequency scope		Base frequency :45Hz ~ 65Hz, bandwidth: 5kHz			
Auto-range switch	Range increseent	Test value exceed 1.1 times of the ratio range			
	Range decreasing	Test value decrease to 30% Of the ratio range	Test value decrease to 8% Of the ratio range	Test value decrease to 20% Of the ratio range	

Remark: The maximum ranges of instrument are shown on the rear panel instrument

2.2 Base error (Accuracy)

Conditions \ Items	Current	Current	Avail-power	Power factor	Frequency
Calibration 12 months Temperature: 13±5℃ Humidity: 30%~75%RH Power voltage: 220±10V Input frequency: 45Hz~65Hz Common-mode: 0V DC Avail-power and Power factor test voltage voltage: 110V/220V/380V	± (0.4% rdg+0.1% range+1 digit)			±(0.004+0.001 / rdg+1 digit)	±(0.1% rdg+1 digit)

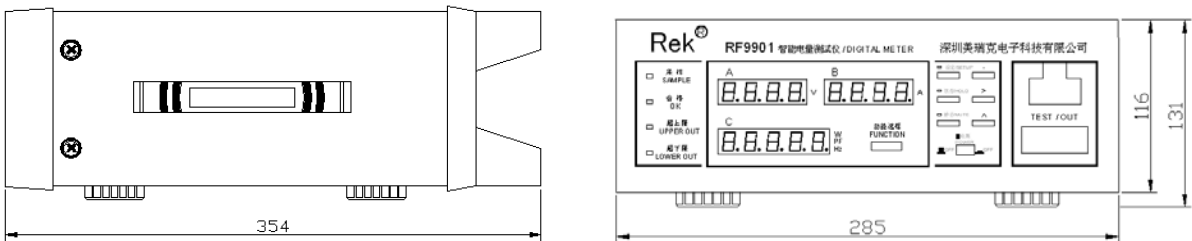
2.3 Display function

Display category: 7 segments LED, display window amounts and display contents:

Models	Windows	Display content	Test range
RF9800	A	V	U: 3.0V~600V
	B	A	I: 0.005A~20A
	C	W	P: 1W~1200W
	D	PF	PF: -1.000~+1.000
RF9901	A	V	U: 3.0V~300V
	B	[m]A	I: 0.005A~20A 或 0.010A~40A
	C	PF, Hz, W	P: 1W~6000W 或 2W~1200W PF: -1.000~+1.000

Refreshing ratio: 3 times / s

2.4 Outer dimension



2.5 Routine techno-index

Warming up time: Approximately 10 minutes

Environmental temperature and humidity scope: 5℃~40℃, 20%~80%RH (No dewdrops)

Isolation impedance: Signal input terminals、Outer shell、Power supply input terminals mutual impedance more than 10MΩ

Withstanding voltage: Signal input terminals and outer shell、Signal input terminals and power supply input terminals AC 2000V with each other within 1 minute & DC2200V with each other within 1 minute

Power supply: 220 ± 22V, Frequency: 50Hz / 60Hz

Power dissipation: Approximately 5W

Weight: Approximately 3.0 kg

Chapter V Display voltage、voltage、current、avail-power、power factor、frequency

5.1 Test / display voltage、current、avail-power

Select display function

A Window: display voltage V

B Window: display current [m]A

C Window: RF9800 avail-power display W: RF9901 display selection PF/Hz/W

D Window: RF9800 power factor display PF

Explanation

Test range

- 1) The maximum test range: 600V or 300V (for RF9901), auto-range switching.
- 2) The maximum test current: 20A or 40A (for RF9901), auto-range switching.
- 3) Power range is determined by voltage and current..

Auto-range

Test range can be auto-calibrated according to input voltage or current, The over-range state take place when the input voltage or current exceed the maximum range by 140%

Range rise

Test will be set to higher range when voltage and current test value exceed the ratio value by 110% or the wave peak value overflow due to wave peak ratio.

Range fall

Test will be set lower range when voltage tested value is lower than the ratio value by 30% (current tested value is lower than the ratio value by 20%, RF9901 is lower than ratio value by 8%), On the other hand, the lower test range may lead to high wave peak overflow

Caution:

The test range switching due to the condition of range rise or decline and test range may be not same even if it has same test result, Generally speaking, the initialize.on is in the maximum range in the beginning of start up.

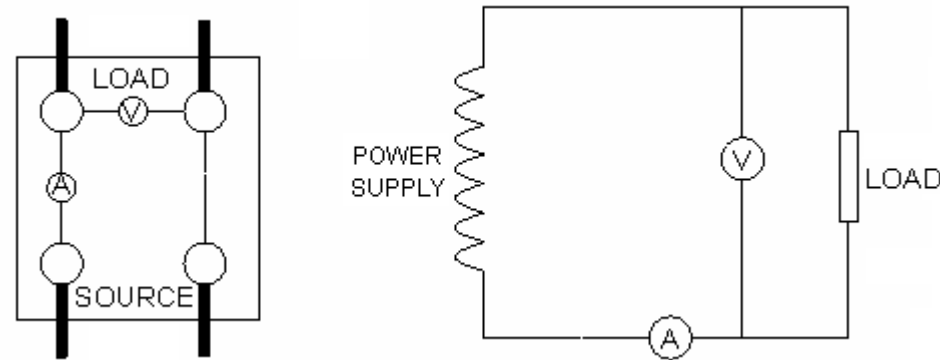
5.2 Calculate / display power factor

Relevant key-press: FUNTION SELECTION.

Chapter IV Preparation before operating

4.1 Cables connection

Caution: Load current go along with the broad-brush cable, It demands these cables have enough safety carrying capacity.



Remark:

- 1、Pay more attention to possible mutual disturbance and noise problems when tested high voltage or current contains hi-frequency ingredient.
- 2、Cable should be as short as possible.
- 3、Thick cable is usually used for current test.
- 4、Cable and ground wire should be away from the instrument shell to weaken the distributing capacitance.

4.2 Turn on / off power

Turn on power

The self-check program start up as soon as power on, After that the instrument will displays turning on information, then instrument be in test-waiting status.

Turn off power

The data that presented current and upper & lower will be stored and unchanged until next start up.

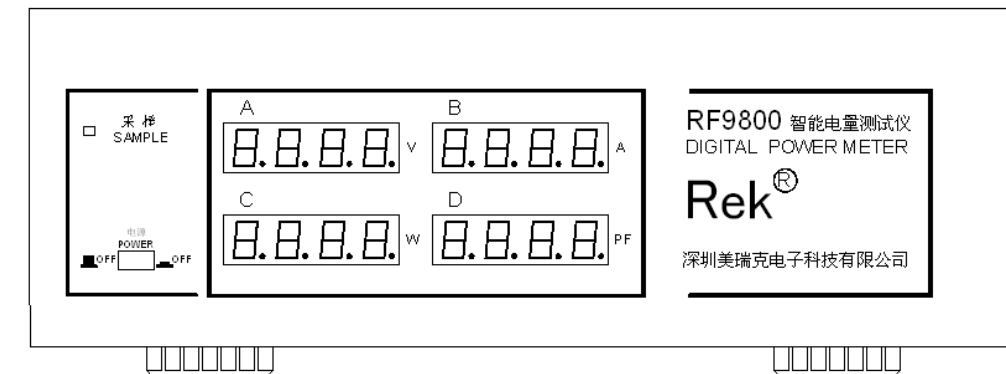
Caution:

The intermission of two power operation should be over 5 seconds or else instrument will display abnormal state.

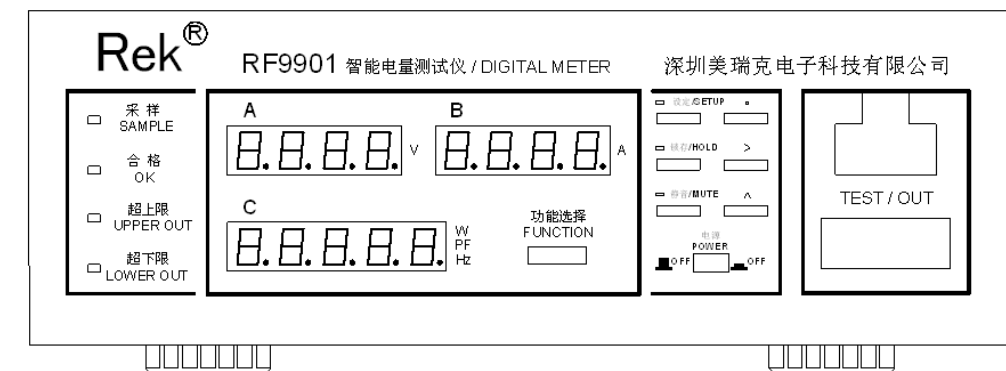
Chapter III Structure 、 buttons & display

3.1 Front panel、 rear panel

Front panel

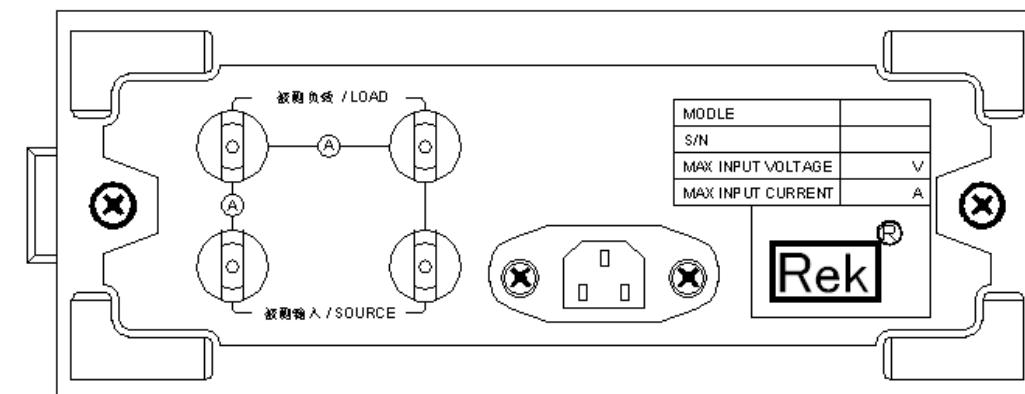


RF9800 front panel



RF9901 front panel

Rear panel



3.2 Operation buttons and function display

3.2.1RF9800 function display

Indicator light

Operation function indicators

Sampling: glint indicates sampling is working, Glint once means the instrument sampling once synchronously, then display refresh once.

Function units

V: Voltage (V)

A: Current (A)

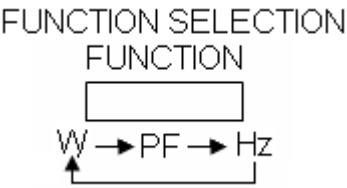
PF: Power factor

W: Avail-power (W)

3.2.2 RF9901 operation buttons and function display

Operation buttons

Function selection / FUNCTION: Display window C display function switch button when routine test.



Set: To set current and upper & lower power value

a) : The key-press to achieve the radix point to move right circularly

>: The key-press to achieve the cursor to move right circularly

^ : The key-press to achieve the place that cursor being to add one circularly (9 plus 1 get 0)

HOLD: Lock the display value, "HOLD" indicator light works,press down again to release locki function.

Mute status: To stop the annunciator working when the test value over limit, then mute status indicator light works and press down again to release mute locking status.

The indicator light extinguishing:

b) : The key-press to achieve current range automatic switching

>: The key-press to achieve 20A or 40A current range lock

^: The key-press to achieve 2A or 4A current range lock

Indicator light

Operation function indicator light

SAMPLE: glint indicate sampling is working, Glint once means the instrument sampling once synchronously, then display refresh once.

HOLD : hold the display value.`

SETUP: denotes instrument are being in the status of current、upper & lower limit lock..

MUTE: denotes annunciator function is stopped.

Upper & lower limit judgement indicator light

OK: "OK" indicator light will be bright when the test value is in the presented scope in process of avail-power and upper&lower current judgement or else be not

UPPER OUT: This incicator light will be bright when the test value is higher than the presented value in process of avail-power、upper & lower limit current judgement or else be not.

LOWER OUT: This incicator light will be bright when the test value is less than the presented value in process of avail-power、upper & lower limit current judgement or else be not.

Function units:

V: Voltage (V)

A: Current (A)

W: Avail-power (W)

PF: Power factor

Hz: Frequency (Hz)

3.3 Over-range test / abnormal state display

Over-range display: The over-range will take place when test voltage or current exceed the maximum range by 140%, Over-range displays"-OL-".

Lower test value display: The display window shows all "0" when test voltage or current is low extraordinarily.

Over-frequency: The display window shows all "0" when the base wave of test object is beyond permitted test scope.

Test interrupt: The display window shows "—" when test range switching or display contents has changed..